

ROAD INDEX

A	I	RADCLIFFE RD.	B1,F1
B	J	BASCOME RD.	F2,F4
		BRAKEMAN RD.	D1,D4
		BROWN RD.	B2,B4
	S	SISSON ROAD	E6,G6
		SUMNER RD.	F1,F2
	K	KILE RD.	G2,G6
C	T	CHARDON WINDSOR RD.	A6,D6
		CLARIDON TROY RD.	D6,E6
		CUTTS RD.	B4,B5
	L		
	U		
D	M		
	V	VENUS RD.	E3,E4
E	N		
	W	WILLIAMS RD.	E1,E3
		WOODIN RD.	A4,D4
F	O	OLD STATE RD.	B1,E6
	X		
G	P	G.A.R. (U.S. 6)	A5,G4
		GRANT ST.	A5
	Y	PEARL RD.	A2,C2
	Z		

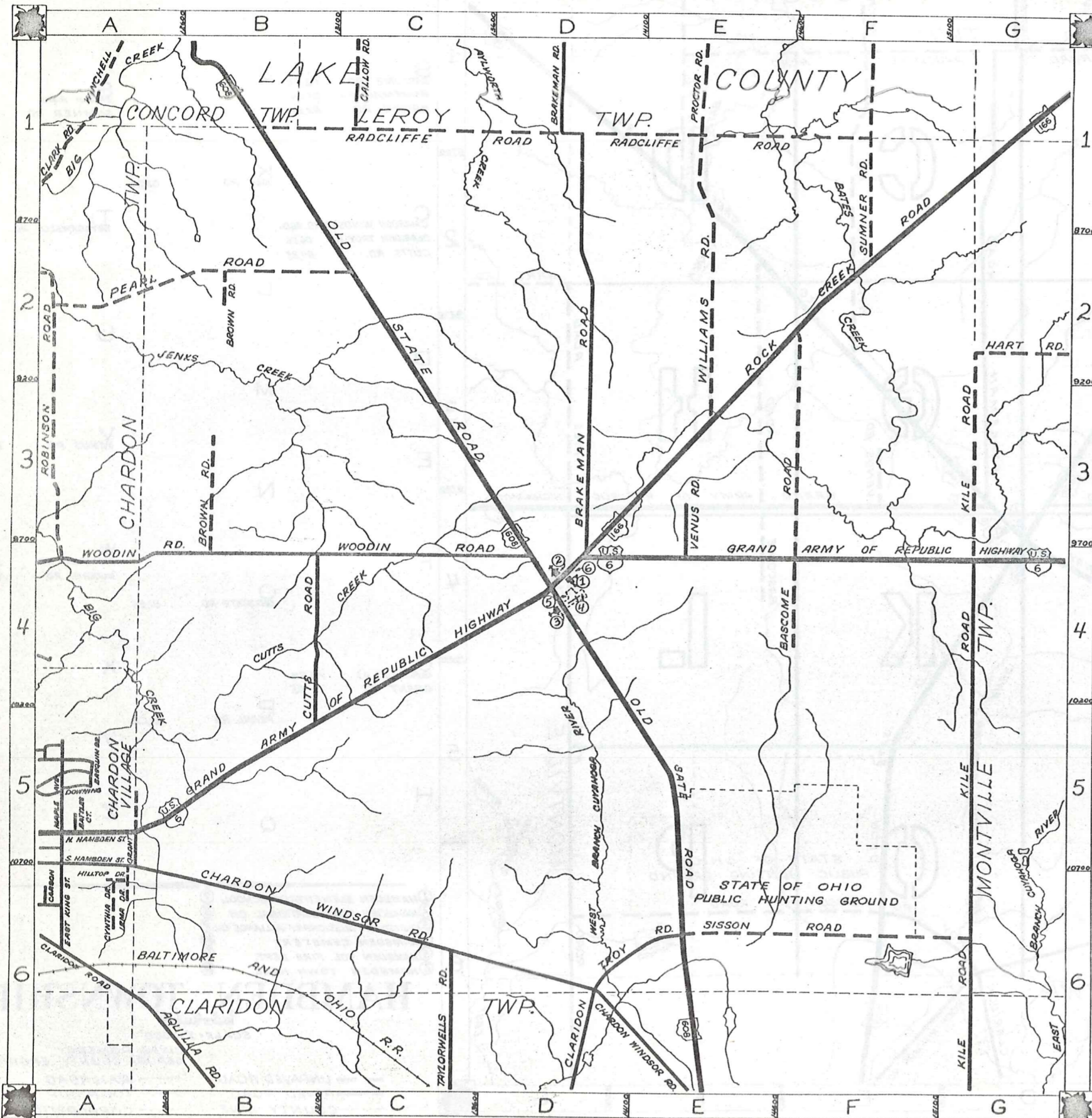
- ① HAMB DEN ELEMENTARY SCHOOL
- ② HAMB DEN CONGREGATIONAL CH.
- ③ CHRISTIAN & MISSIONARY ALLIANCE CH.
- ④ HAMB DEN CEMETERY
- ⑤ HAMB DEN VOL. FIRE DEPT.
- ⑥ HAMB DEN TOWN HALL

HAMB DEN TOWNSHIP

SCALE - 1"=2000'

CLYDE POMEROY
GEAUGA COUNTY ENGINEER

- UNPAVED ROAD
- PAVED ROAD
- COUNTY LINE
- RAILROAD
- TOWNSHIP LINE
- CORPORATION LINE



ROAD INDEX

A	I	R	RADCLIFFE RD. B1,F1
B	J	S	BASCOMBE RD. F2,F4 BRAKEMAN RD. D1,D4 BROWN RD. B2,B4 SISSON ROAD E6,G6 SUMNER RD F1,F2
C	K	T	KILE RD. G2,G6 CHARDON WINDSOR RD. A6,D6 CLARIDON TROY RD. D6,E6 CUTTS RD. B4,B5 TAYLORWELLS RD. C6
D	L	U	
E	M	V	VENUS RD. E3,E4
F	N	W	WILLIAMS RD. E1,E3 WOODIN RD. A4,D4
G	O	X	OLD STATE RD. B1,E6
	P	Y	PEARL RD. A2,C2
	Q	Z	

- ① HAMB DEN ELEMENTARY SCHOOL
- ② HAMB DEN CONGREGATIONAL CH.
- ③ CHRISTIAN & MISSIONARY ALLIANCE CH.
- ④ HAMB DEN CEMETERY
- ⑤ HAMB DEN VOL. FIRE DEPT.
- ⑥ HAMB DEN TOWN HALL

HAMB DEN TOWNSHIP

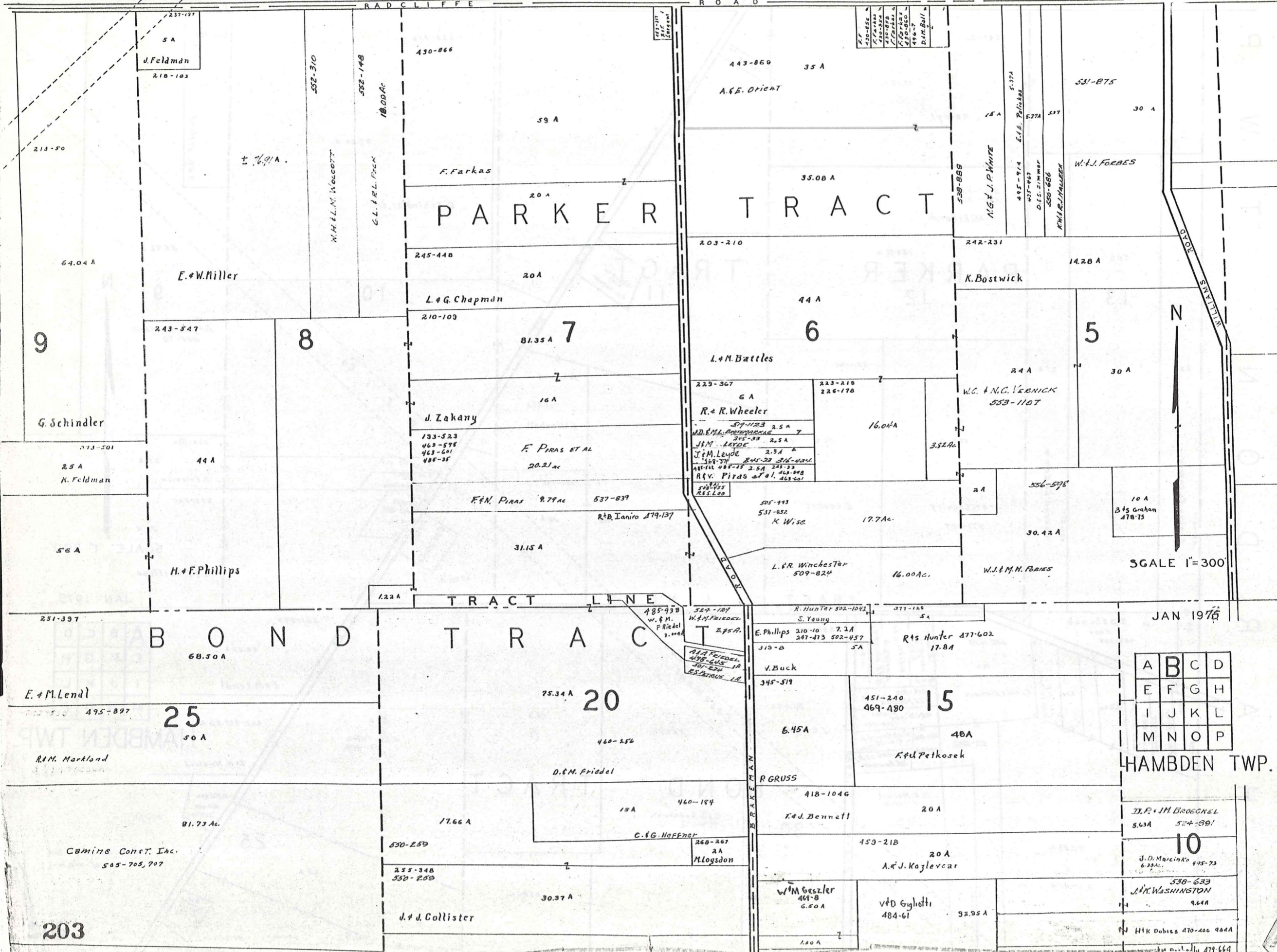
SCALE = 1" = 2000'

O.J. ROBINSON
GEAUGA COUNTY ENGINEER

- UNPAVED ROAD
- PAVED ROAD
- COUNTY LINE
- RAILROAD
- TOWNSHIP LINE
- CORPORATION LINE

L A K E C O U N T Y

RADCLIFFE ROAD



PARKER TRACT

BOND TRACT

JAN 1976

A	B	C	D
E	F	G	H
I	J	K	L
M	N	O	P

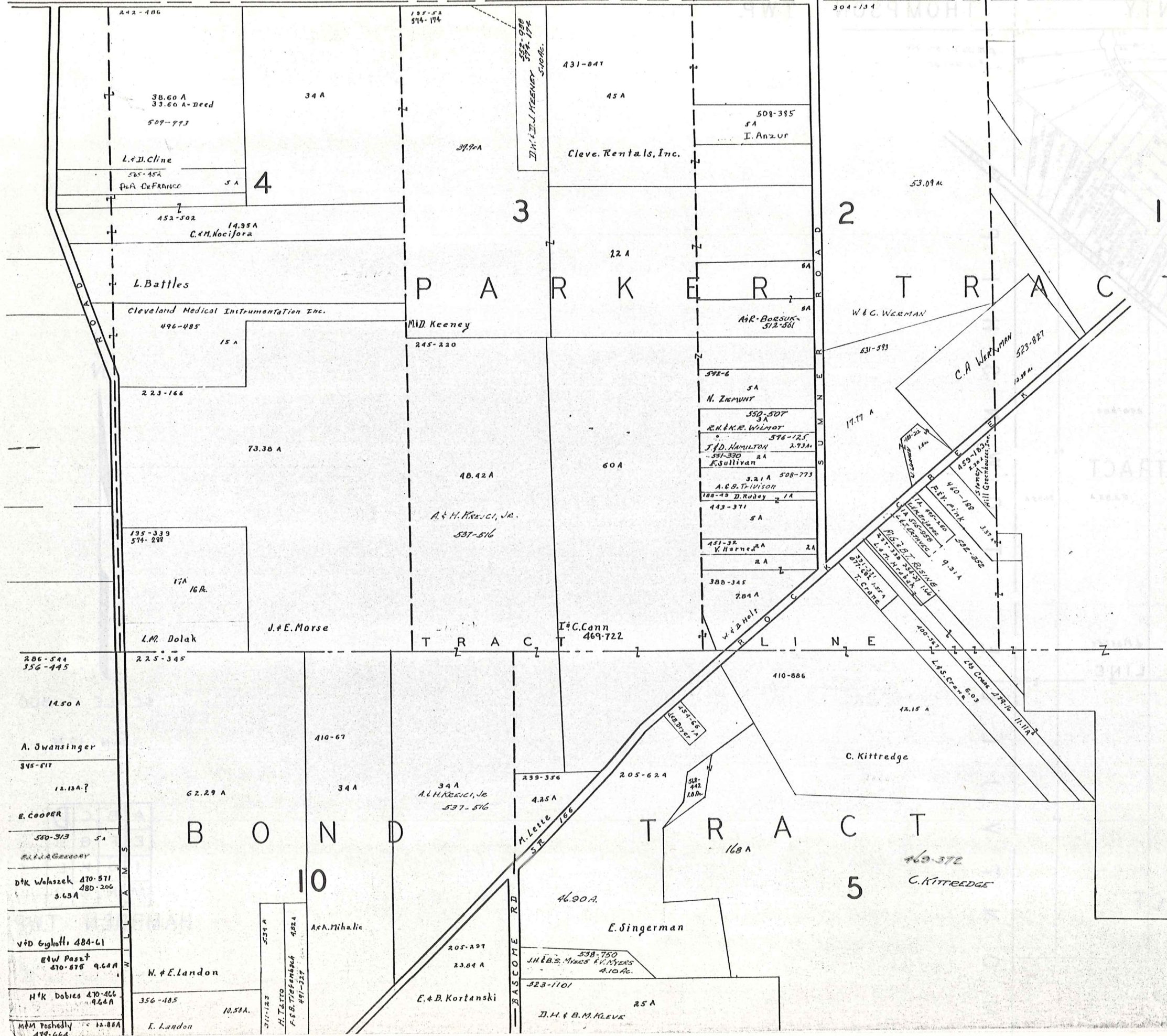
HAMBLEN TWP.

203

10

479-664

L A K E C O U N T Y

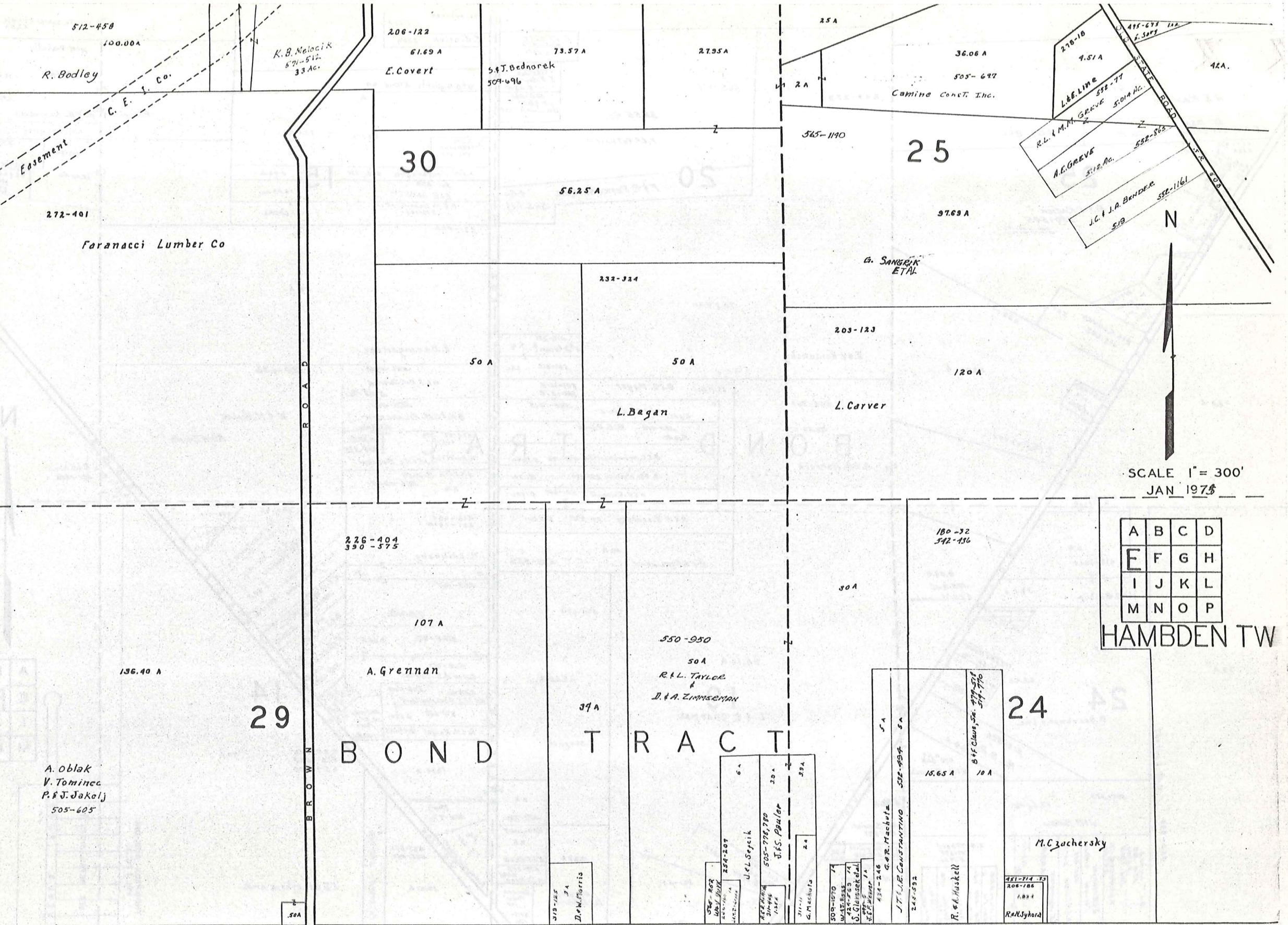


SCALE 1" = 300'
JAN 1975

A	B	C	D
E	F	G	H
I	J	K	L
M	N	O	P

HAMB DEN TWP.

C H A R D O N T O W N S H I P

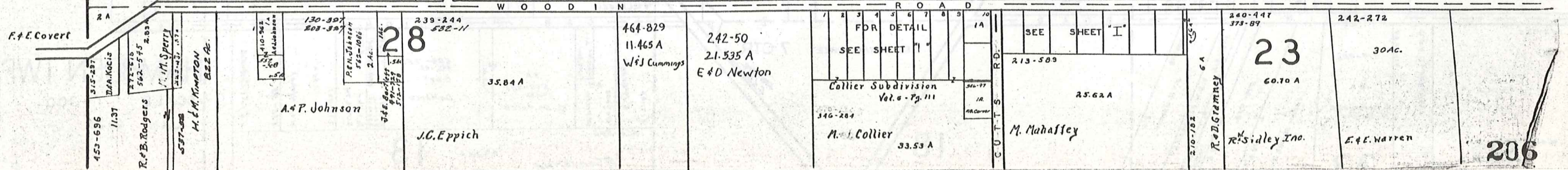


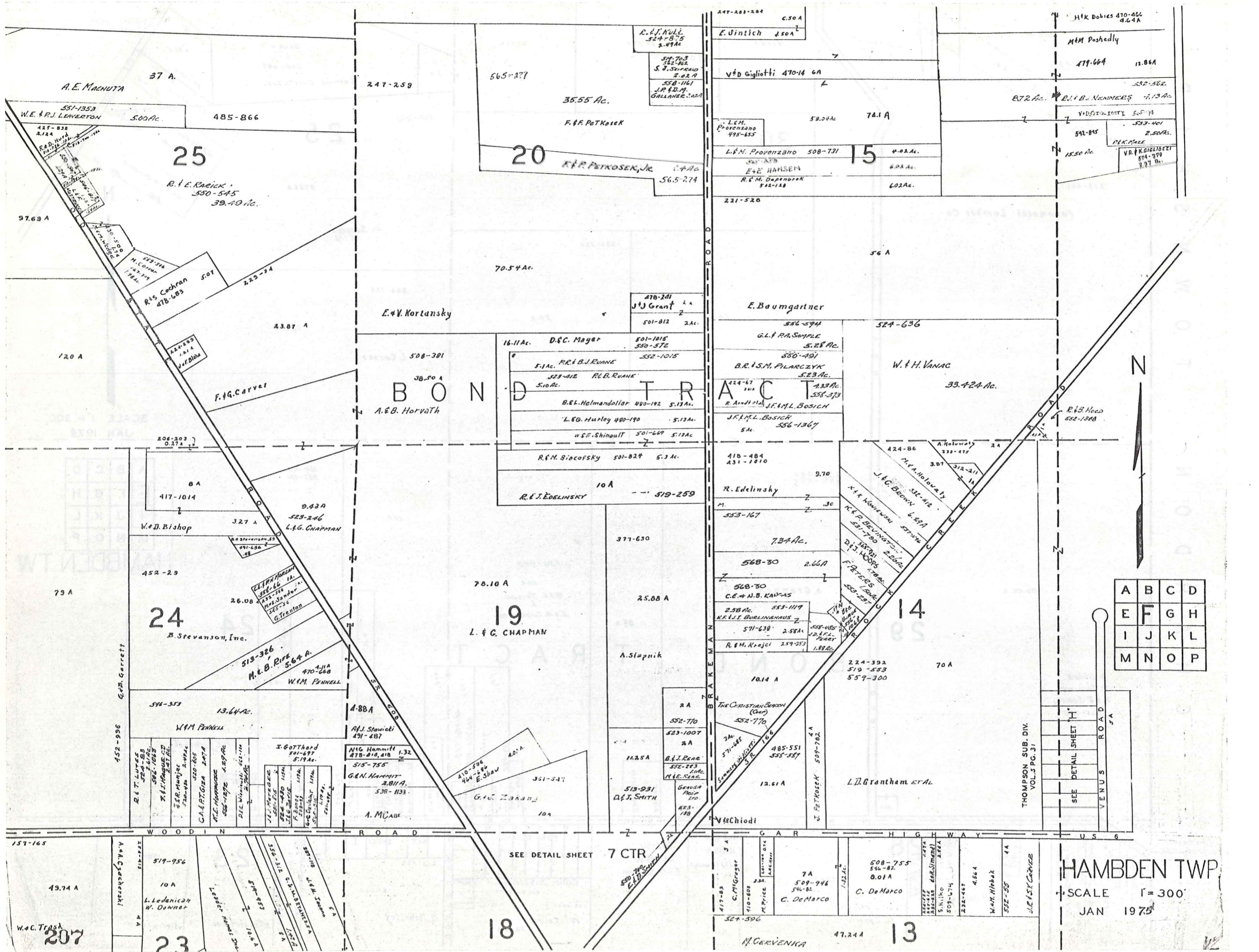
SCALE 1" = 300'
JAN 1975

A	B	C	D
E	F	G	H
I	J	K	L
M	N	O	P

HAMB DEN TW

BOND TRACT





A	B	C	D
E	F	G	H
I	J	K	L
M	N	O	P

HAMB DEN TWP
 SCALE 1" = 300'
 JAN 1975

SEE DETAIL SHEET 7 CTR

THOMPSON SUB. DIV.
 VOL. 3 PG. 31

SEE DETAIL SHEET 'H'

VENUS ROAD

SEE DETAIL SHEET 'H'

VENUS ROAD

VENUS ROAD

VENUS ROAD

VENUS ROAD

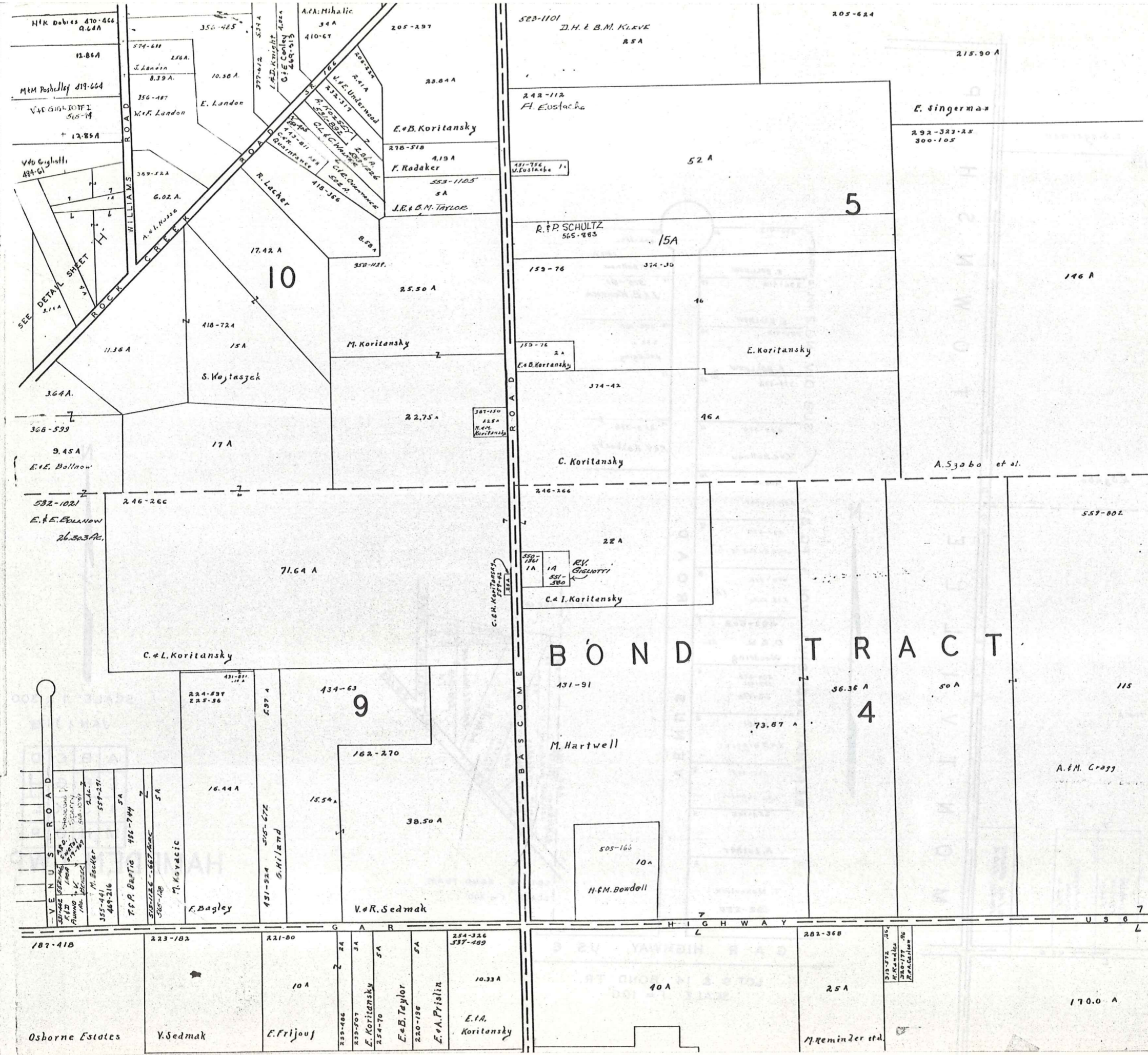
VENUS ROAD

VENUS ROAD

VENUS ROAD

VENUS ROAD

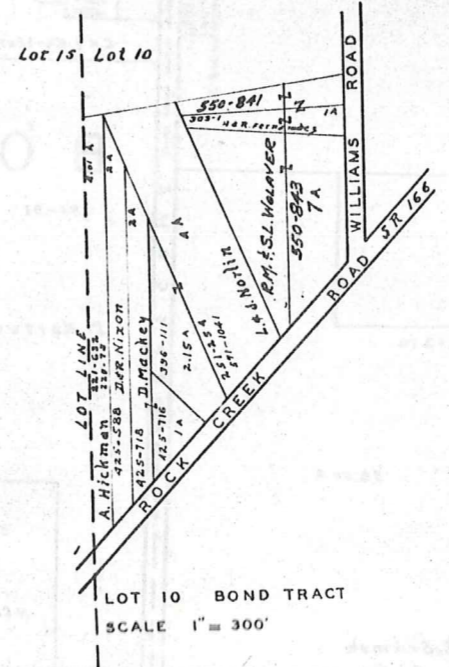
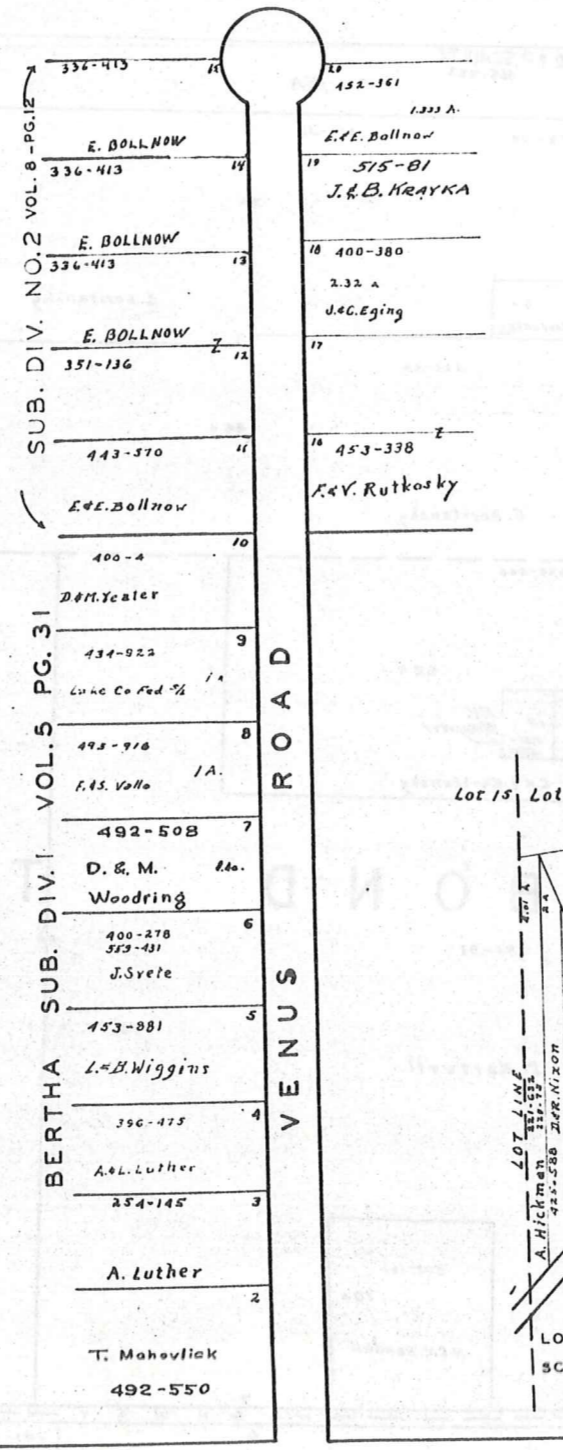
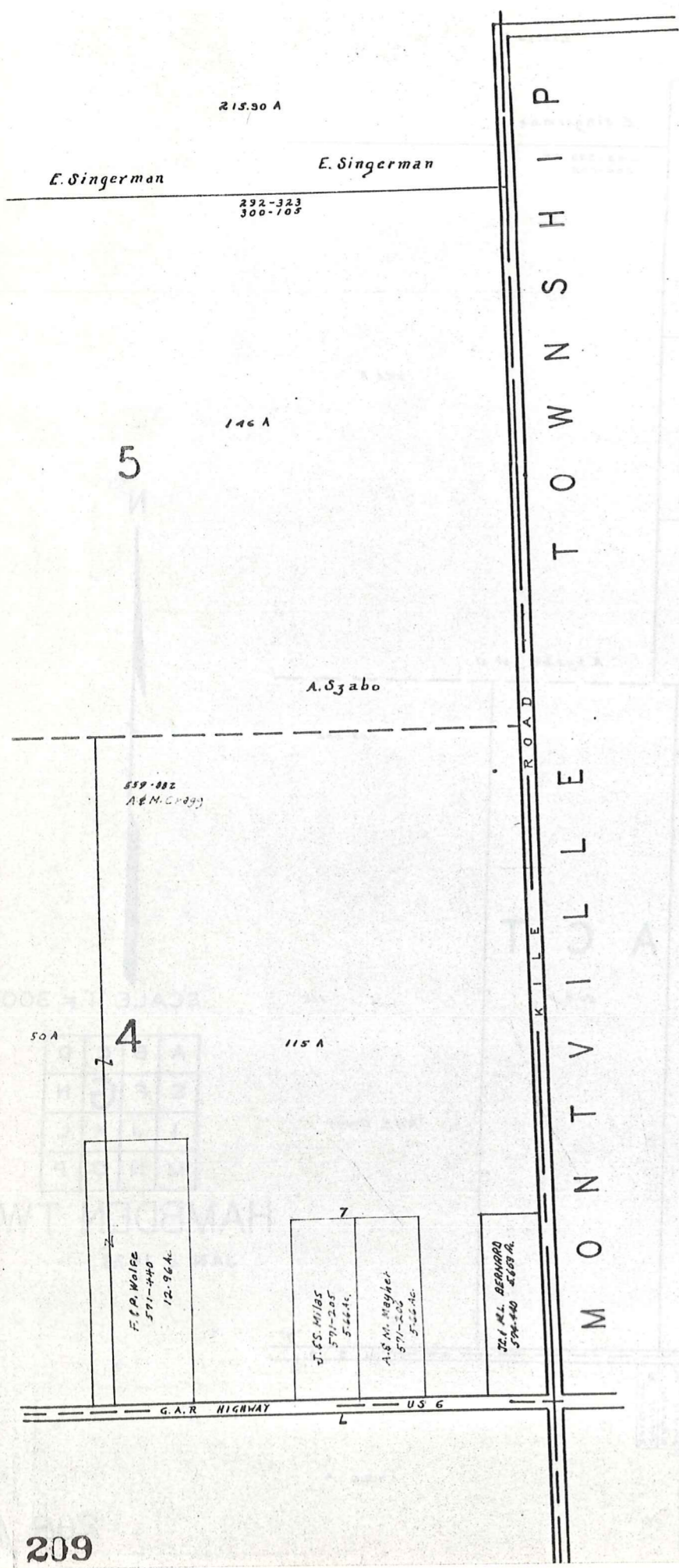
VENUS ROAD



SCALE 1" = 300'

A	B	C	D
E	F	G	H
I	J	K	L
M	N	O	P

HAMB DEN TWP.
JAN 1, 1976



T O W N S H I P
M O N T V I L L E

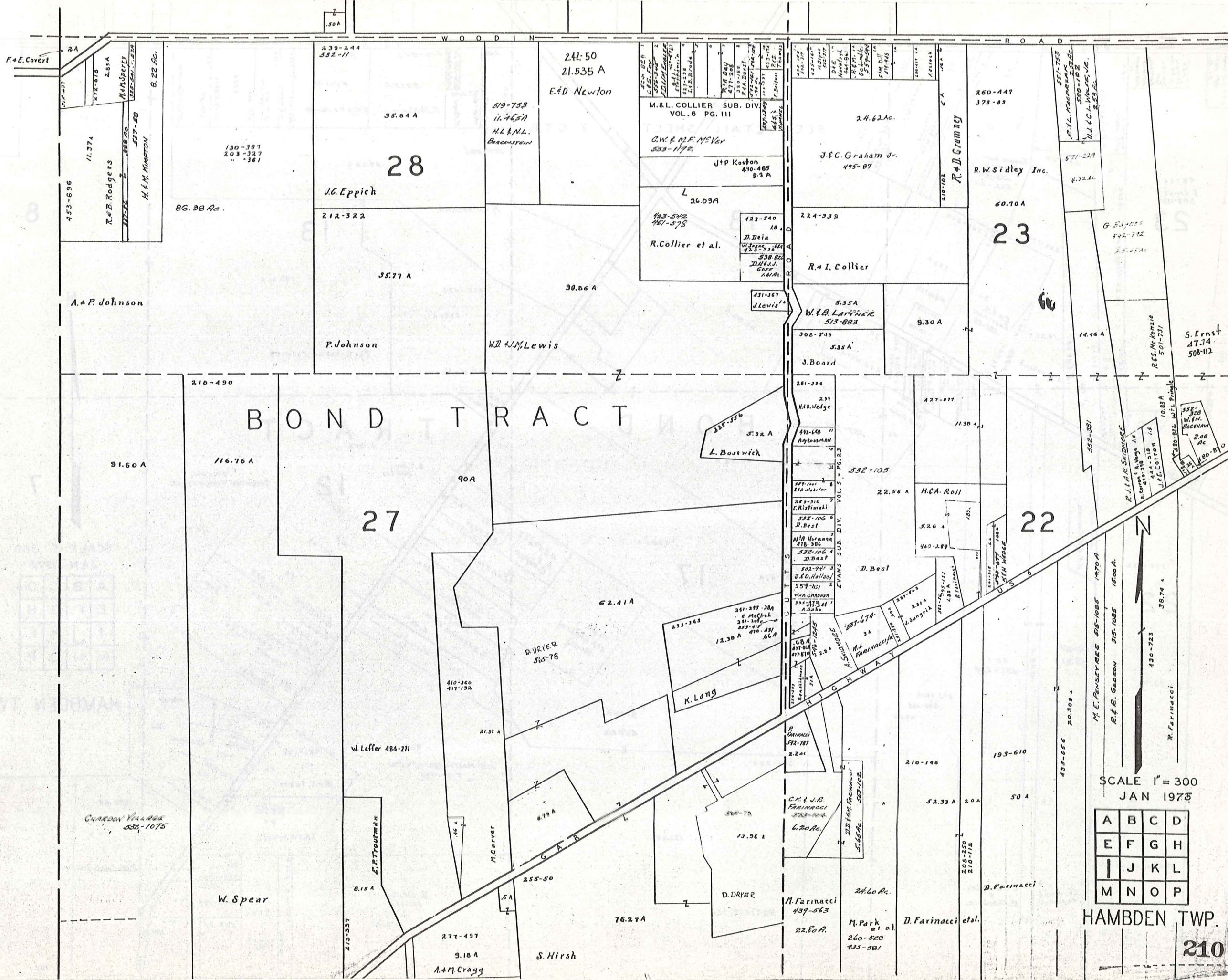


SCALE 1" = 300'
JAN 7, 1974

A	B	C	D
E	F	G	H
I	J	K	L
M	N	O	P

HAMB DEN TWP.

LOT 9 & 14 BOND TR.
SCALE 1" = 100'



BOND TRACT

27

28

23

22

SCALE 1" = 300
JAN 1975

A	B	C	D
E	F	G	H
I	J	K	L
M	N	O	P

HAMB DEN TWP.

WOODIN ROAD

U S 6

SEE DETAIL SHEET 7 CTR

18

13

8

BOND TRACT

12

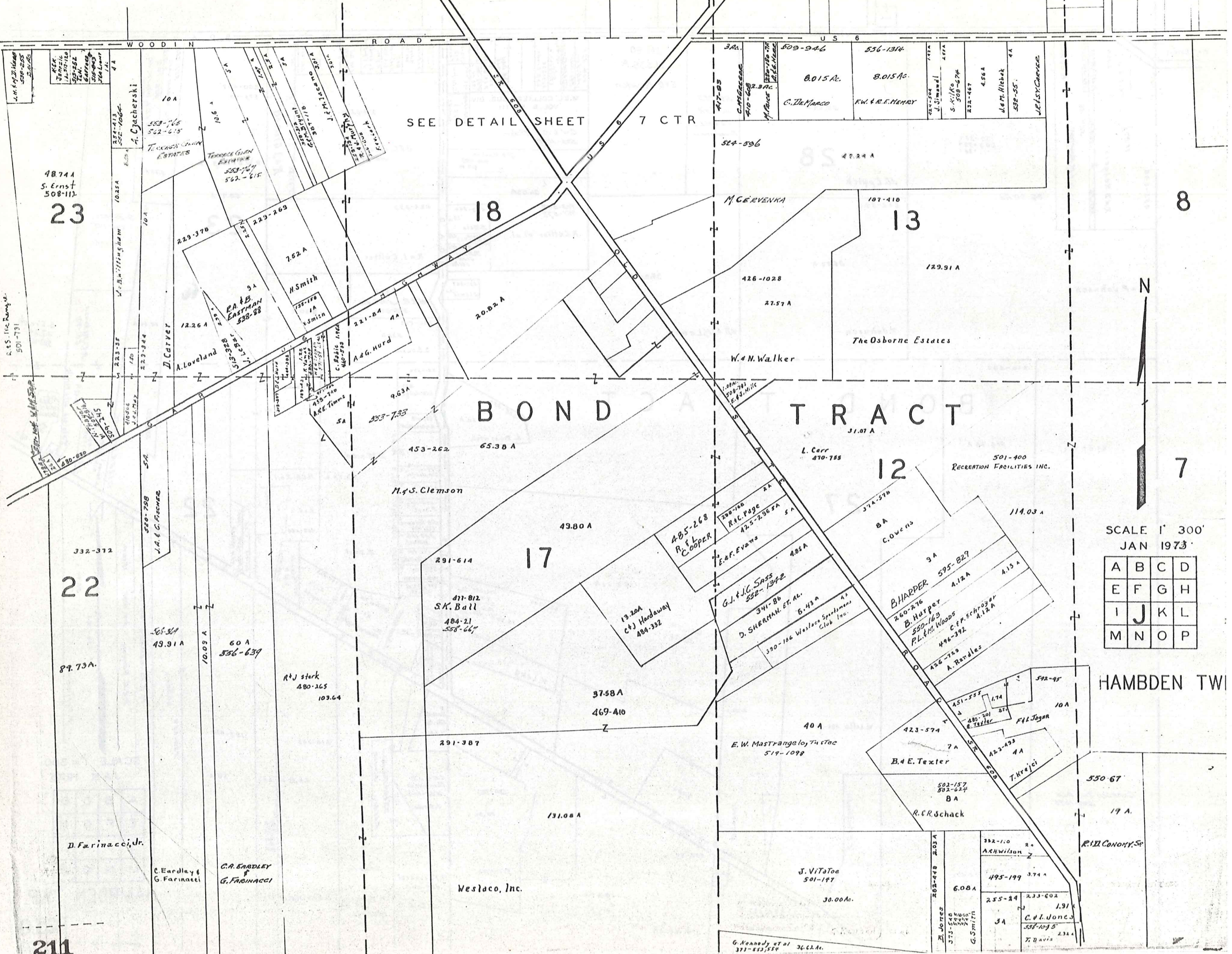
7

17

SCALE 1" = 300'
JAN 1973

A	B	C	D
E	F	G	H
I	J	K	L
M	N	O	P

HAMB DEN TW



48744
S. Ernst
508-112

332-312
22

89.73A.

211

10A
553-765
562-615
Terrace Glen Estates
A. Cjacherski

223-378
12.26 A
A. Loveland
D. Carver

7.52 A
H. Smith
732-198
V. Smith

9A
R.A. & B. EASTMAN
538-88
825-535
J. Smith

9.63A
553-735
A.G. Hurd
A.G. Hurd

453-262
65.38 A
M. & S. Clemson

291-614
471-812
S.K. Ball
484-21
558-667

37.58A
469-410

131.08 A
Westlaco, Inc.

485-268
R. & L. Cooper
200-760
R.C. Page
425-236 2A
E. & F. Evans

G.J. & J.C. SASS
552-1342
341-86
D. SHERMAN, ET. AL.
6.43 A

330-186 Westlaco Sportsmans Club Inc.
485 A

L. Carr
470-755

B. HARPER
260-276
B. Harper
550-163
P.L. & M. Woods
496-392
C.E.F. Schroder
A.12 A
A.13 A

426-123
A. Rattalos

40 A
E. W. MaStrange et al
519-1098

423-574
B. & E. Texter

502-157
502-624
R.C.R. Schack

J. ViToe
501-147
30.00 Ac.

382-110
A. & M. Wilson
495-199
3.74 A

255-24
3A
C. & I. Jones
553-1035
T. Davis

203-478
203A
B. Jones
573-598
573-598
G. Smith

550-67
19 A.
R. H. CONROY, Sr

520-798
J.A. & C. Fischer

49.91 A
60 A
556-639

R. & J. Stark
480-265
103.64

D. Farinacci, Jr.

C. Eardley & G. Farinacci

C.A. EARDLEY & G. FARINACCI

G. Kennedy et al
371-553, 554
36.62 Ac.

M. C. ERVENKA

W. & N. Walker

The Osborne Estates

501-400
RECREATION FACILITIES INC.

592-95
F. & L. Jagan
E. Taylor

123-103
T. Krajci

323-602
1.91 A
C. & I. Jones
553-1035
T. Davis

R. & S. The Remy Co.
501-731

334-413
552-1064
A. Cjacherski

10A

10A

10A

10.93 A

10A

10A

106 A

106 A

106 A

106 A

106 A

106 A

106 A

106 A

106 A

106 A

106 A

106 A

106 A

106 A

106 A

106 A

106 A

106 A

106 A

106 A

106 A

106 A

106 A

106 A

106 A

106 A

106 A

106 A

106 A

106 A

106 A

106 A

106 A

106 A

106 A

106 A

106 A

106 A

106 A

106 A

106 A

106 A

106 A

106 A

106 A

106 A

106 A

106 A

106 A

106 A

106 A

106 A

106 A

106 A

106 A

106 A

106 A

106 A

106 A

106 A

106 A

106 A

106 A

106 A

106 A

106 A

106 A

106 A

106 A

106 A

106 A

106 A

106 A

106 A

106 A

106 A

106 A

106 A

106 A

106 A

106 A

106 A

106 A

106 A

106 A

106 A

106 A

106 A

106 A

106 A

106 A

106 A

106 A

106 A

106 A

106 A

106 A

106 A

106 A

106 A

106 A

106 A

106 A

106 A

106 A

106 A

106 A

106 A

106 A

106 A

106 A

106 A

106 A

106 A

106 A

106 A

106 A

106 A

106 A

106 A

106 A

106 A

106 A

106 A

106 A

106 A

106 A

106 A

106 A

106 A

106 A

106 A

106 A

106 A

106 A

106 A

106 A

106 A

106 A

106 A

106 A

106 A

106 A

106 A

106 A

106 A

106 A

106 A

106 A

106 A

106 A

106 A

106 A

106 A

106 A

106 A

106 A

106 A

106 A

106 A

106 A

106 A

106 A

106 A

106 A

106 A

106 A

106 A

106 A

106 A

106 A

106 A

106 A

106 A

106 A

106 A

106 A

106 A

106 A

106 A

106 A

106 A

106 A

106 A

106 A

106 A

106 A

106 A

106 A

106 A

106 A

106 A

106 A

106 A

106 A

106 A

106 A

106 A

106 A

106 A

106 A

106 A

106 A

106 A

106 A

106 A

106 A

106 A

106 A

106 A

106 A

106 A

106 A

106 A

106 A

106 A

106 A

106 A

106 A

106 A

106 A

106 A

106 A

106 A

106 A

106 A

106 A

106 A

106 A

106 A

106 A

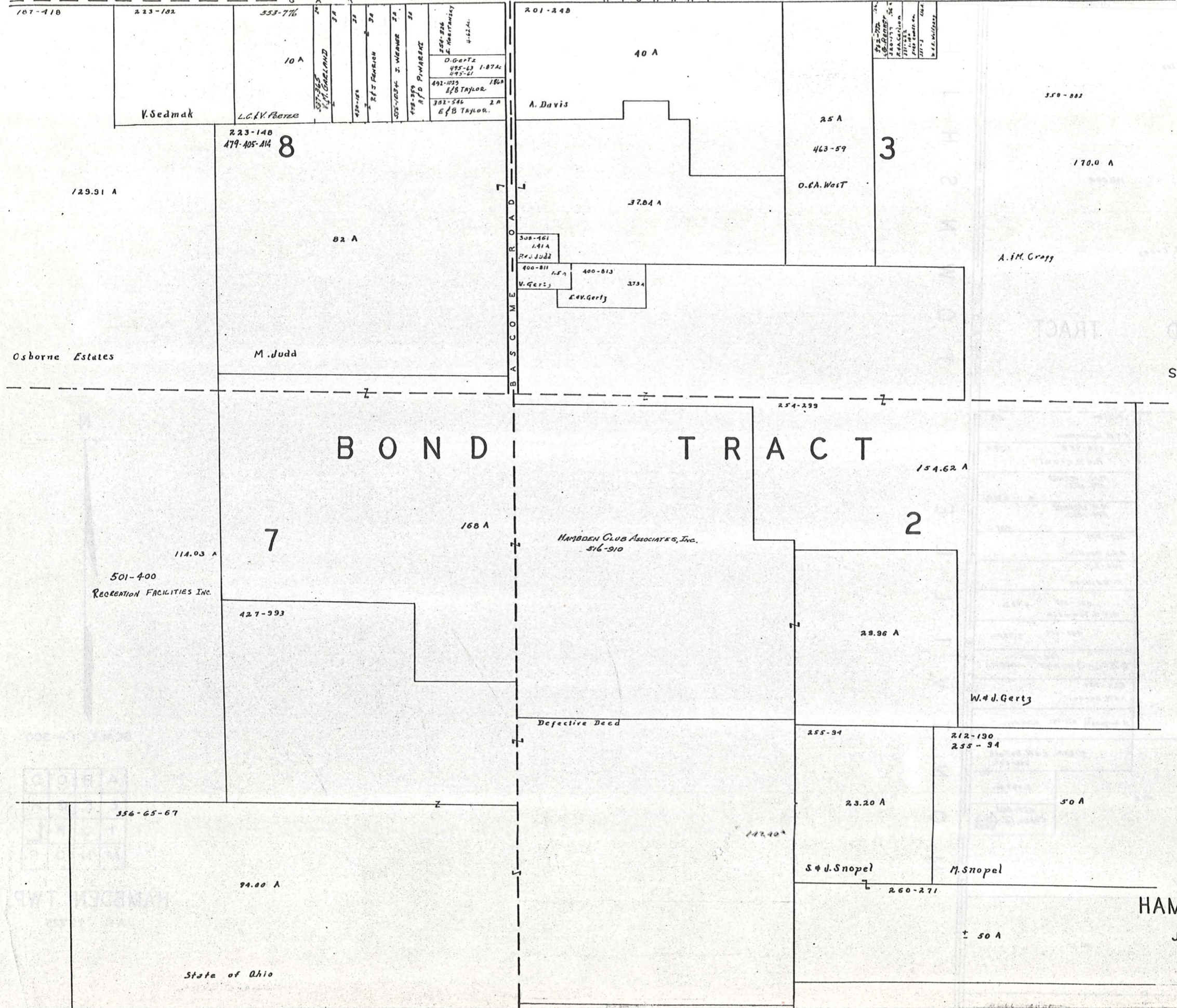
106 A

106 A

187-418 223-182 553-776 201-248 350-882 170.0 A

H I G H W A Y

U S 6



SCALE 1" = 300'

A	B	C	D
E	F	G	H
I	J	K	L
M	N	O	P

HAMB DEN TWP.

JAN 1975

559-882

3

170.00A.

A. & M. Cragg

BOND TRACT

T O W N S H I P
R O A D
M O N T V I L L E

2

342-811	5A.
L. D. Pomeroy	
430-352	4.98A.
R. & B. Grant	
M. M. Lackner	
574-1095	4.98A.
M. M. Lackner	
574-1093	4.98A.
263-201	
H. J. Gardini	
259-219	
R. Kavaras	
460-398	4.98Ac.
M. & H. Tomasin	
460-480	4.98Ac.
552-521	
G. D. & C. K. Seacrist	4.98Ac.
424-826	
A. M. Burnett	
H. Berganski 477-502	4.98Ac.

212-190
255-94

5.187Ac. C. & W. Ballash
486-507

50 A.

3.027Ac.

537-253
CARLO, Co., (Inc)
3.03A

M. Snopel

260-271

50 Ac.

213

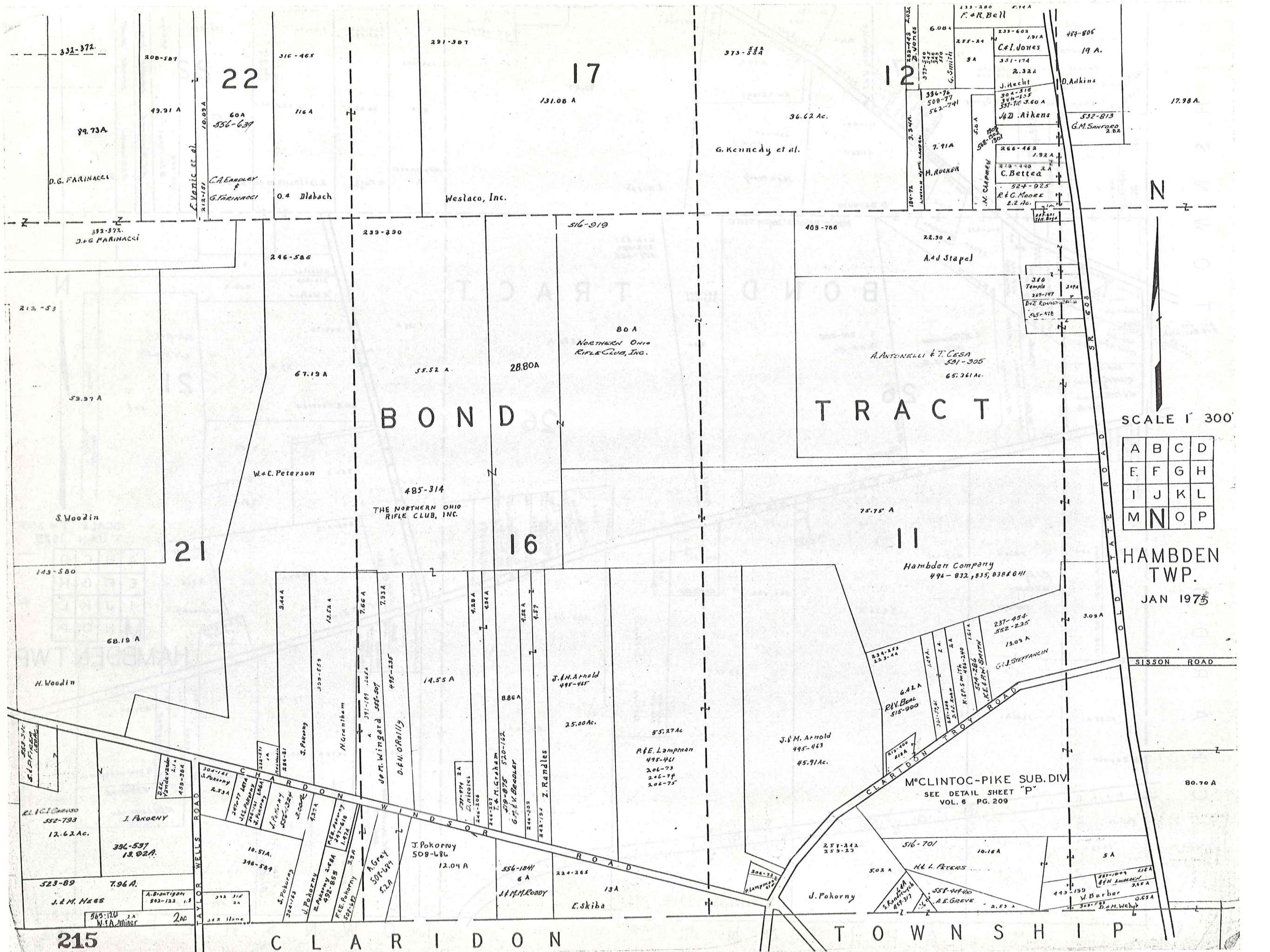
S. & J. Snopel



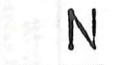
SCALE 1" = 300'

A	B	C	D
E	F	G	H
I	J	K	L
M	N	O	P

HAMB DEN TWP.
JAN. 1973



BOND TRACT



SCALE 1" = 300'

A	B	C	D
E	F	G	H
I	J	K	L
M	N	O	P

HAMB DEN TWP.
JAN 1975

SISSON ROAD

CLARIDON TROY ROAD
M^cCLINTOC-PIKE SUB. DIV
SEE DETAIL SHEET "P"
VOL. 6 PG. 209

215

CLARIDON

TOWNSHIP

22

17

12

21

16

11

291-307

373-554

133-280 2.74 A

332-372

200-507

316-465

79.73A

49.91 A

60A
536-639

116A

Weslaco, Inc.

G. Kennedy et al.

36.62 Ac.

336-76
500-77
562-741

394-316
346-135
337-110 3.60 A

483-805
19 A.

17.98 A.

O. Adkins
532-813
G.M. SANFORD
2.82

D.G. FARINACCI

C. Varnic et al.
10.03A
213-151

C.A. ENNOLY
&
G. FARINACCI

O.4 Dlabach

332-572
D.G. FARINACCI

239-290

516-919

409-706

22.30 A

212-53

246-506

59.97 A

67.19 A

55.52 A.

28.80A

80 A
NORTHERN OHIO
RIFLE CLUB, INC.

A. ANTONELLI & T. CESA
531-305
65.261 Ac.

388
Temple
247-147
D.W. ROBERTSON
245-478

W.C. Peterson

485-314
THE NORTHERN OHIO
RIFLE CLUB, INC.

S. Woodin

75.75 A

Hambden Company
496-832, 835, 838 & 841

143-580

68.19 A

H. Woodin

14.55 A

J.A.M. Arnold
495-445

25.00 Ac.

55.27 Ac
R.E. Lampman
495-441
206-73
206-74
206-75

J.M. Arnold
495-463
45.91 Ac.

642A
R.V. Beal
515-900

237-454
552-235
13.03 A
G.J. STEFFANIN

3.03 A

80.70 A

ELI G. CHANDLER
352-793
12.62 Ac.

J. POKORNY
396-537
18.02 A.

10.51A
346-589

J. Pokorny
508-686
12.04 A

556-1844
6 A
J.F.M. RODDY

224-285
13A
E. Skiba

257-242
253-23

516-701

10.18 A

5 A

523-89
J. & M. HESS
7.96 A.

A. BRANTIGAN
502-132 1.9
212 316
2A

J. Pokorny
508-686
492-855

F.L.E. Pokorny
508-686
508-686

A. Grey
508-686
52A

J. Pokorny
508-686

556-1844
6 A

224-285
13A

E. Skiba

J. Pokorny

502 A

H.L. PETERS

558-4940
A.E. GREVE
2.53 A

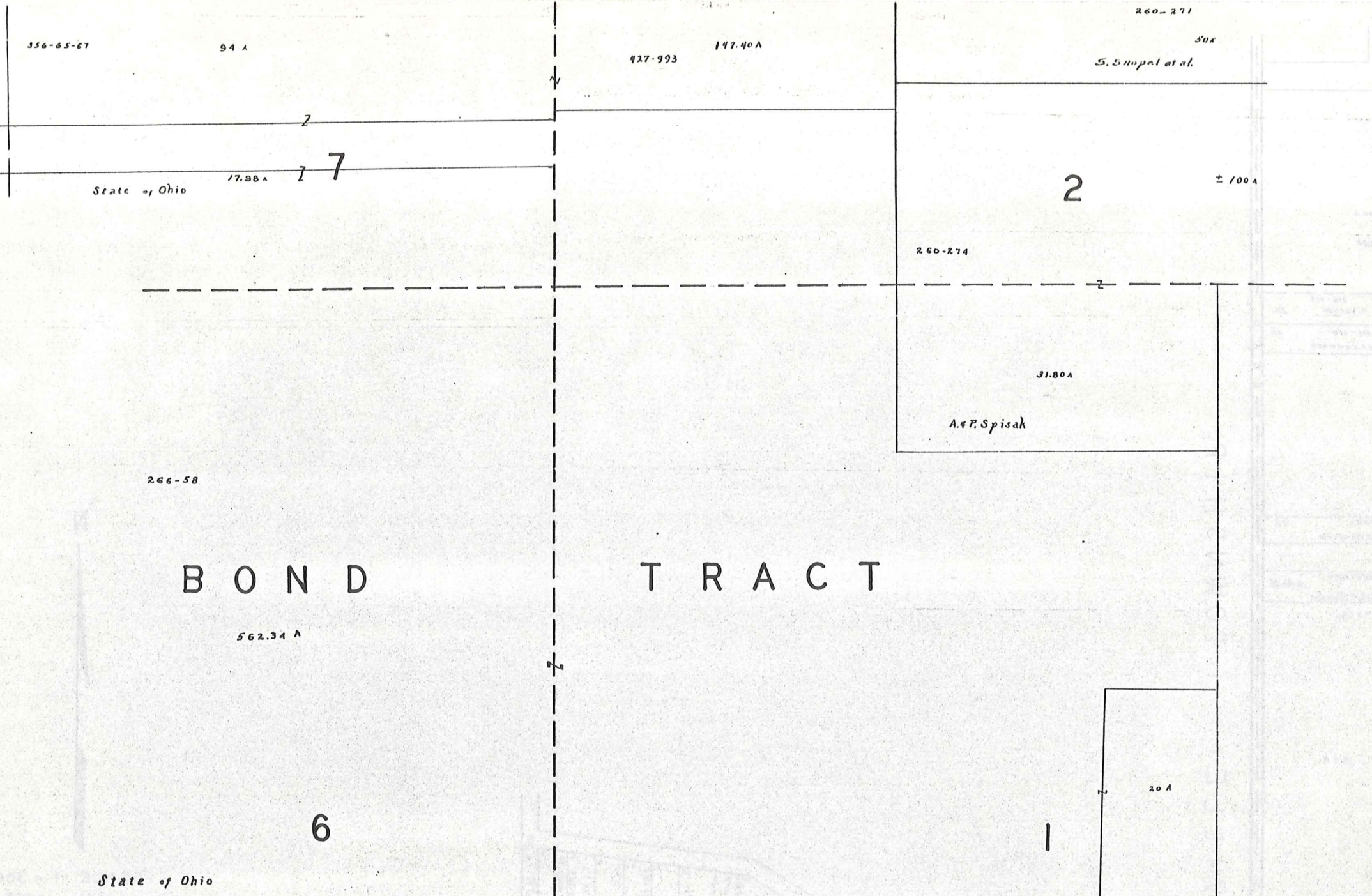
493 199
V. Barber
0.65A

508-686
J.M. WELCH

TAYLOR WELLS ROAD

CLARIDON TROY ROAD

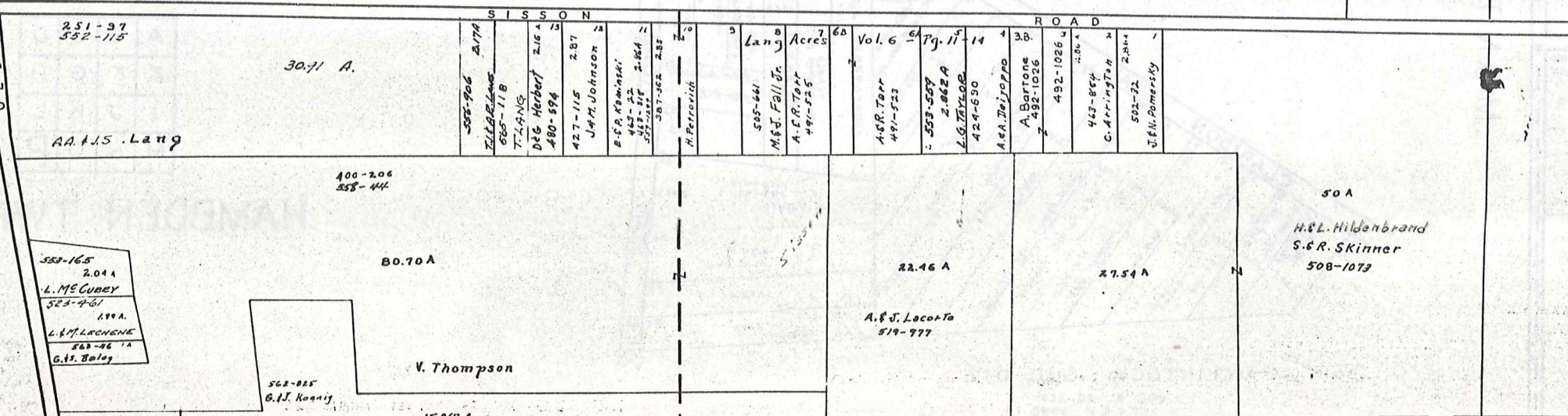
OLD STATE ROAD



SCALE 1" = 300'

A	B	C	D
E	F	G	H
I	J	K	L
M	N	O	P

HAMB DEN TWP.
 JAN 1975



CLARIDON TOWNSHIP

D. F. Brewton
 819-963 6.4
 1719.54

